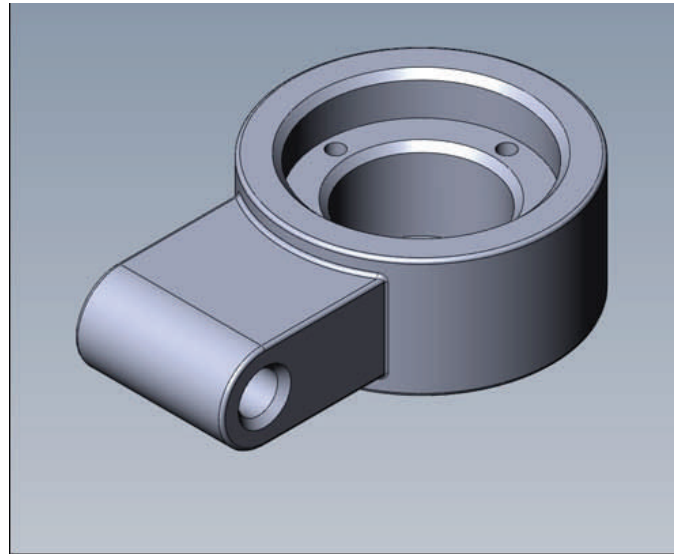
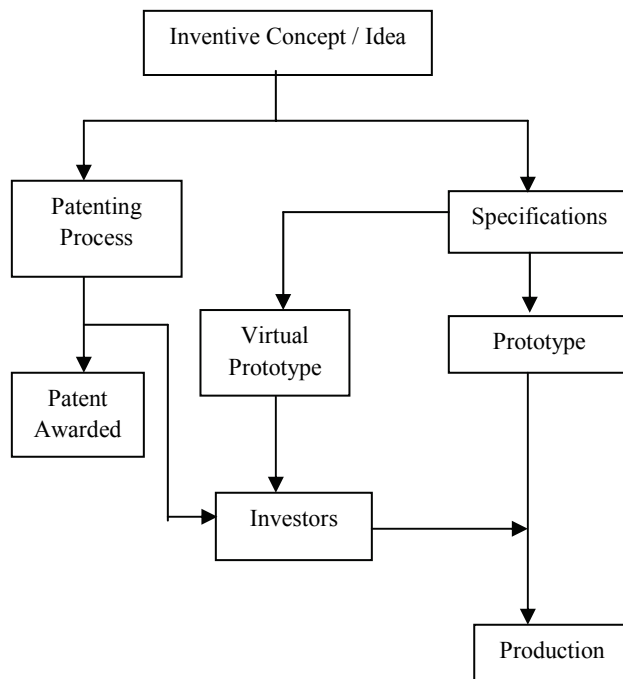


Computer Aided Drafting & Prototyping Services

The Product Development Cycle

The diagram below illustrates a general example of a product development cycle beginning from an initial concept/idea and ending at a manufactured product.

Many inventors have patentable or patented products but lack the knowledge to convert their products to working samples. While a patent specification may define an invention in general and broad terms, the requirements for a manufacturing specification must be defined in very specific and detailed terms. Therefore, we receive numerous inquiries for advice on converting inventions into working products.



Conceptual Ideas

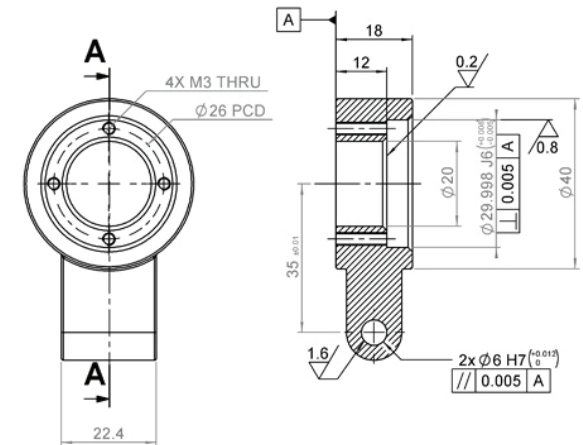
An inventor with a conceptual idea may produce sketches to describe the invention in layman terms. Usually a technically trained person may find it easier to define the concept or idea in terms that are easily understood by one skilled in the art of the inventor's field of endeavour.

In helping inventors fully illustrate their conceptual ideas, our engineering drafters convert such ideas into proper drawings for patents, prototypes and production models based on the inventor's description and sketches! However, inventors have to provide workable illustrations for our drafters to fully understand and convert the idea into engineering drawings

Prototyping

While the patenting process is in progress, inventors may wish to make a prototype of the invention for presentation to industry. Often, prototypes are very basic and "1st-cut" virtual or physical models of the invention. For example, prototypes are primarily used to test and qualify the invention for workability and functionality.

We are able to source prototype costs at competitive prices. We assist inventors make the initial contact with manufacturers. Upon obtaining proposals to fabricate the product, the inventors will deal directly with the manufacturer and communicate their needs in a manner that is easy and convenient for all parties.



For more information about Computer Aided Drafting and Prototyping Services, please Contact:
Law Office of Ashkan Najafi, P.A.
6817 Southpoint Pkwy, Suite 2301, Jacksonville, FL 32216
www.patent-usa.com
Phone: 904-296-0055
Fax: 904-296-0056
Email: patentattorney@patent-usa.com